

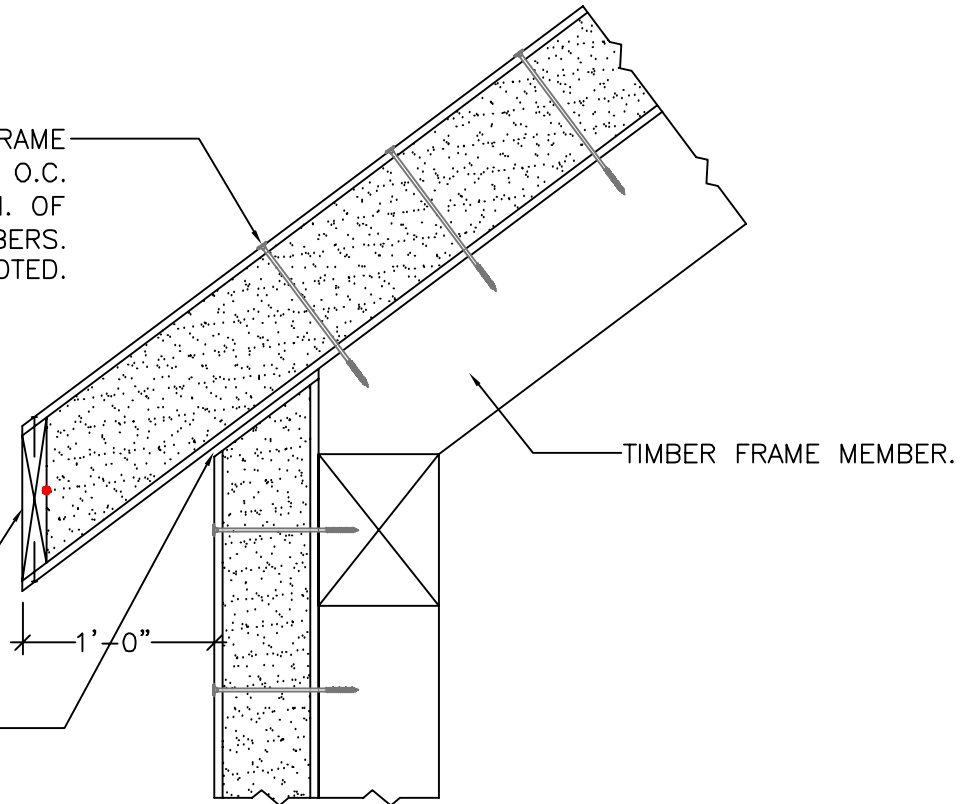
#26

PLUMB CUT EAVE OVERHANG CONNECTION

ATTACH PANELS TO TIMBER FRAME MEMBERS W/ SIP FASTENERS @ 10" O.C. (5 PER 4' PANEL WIDTH) W/ A MIN. OF 2" OF EMBEDMENT INTO ALL TIMBERS. TYPICAL UNLESS OTHERWISE NOTED.

STUFF EXPOSED PANEL EDGE W/ CONT. BEVELED 2x MATERIAL. SECURE OSB PANEL SKINS TO 2x W/ 0.131" DIA. x 2½" LONG GALV. NAILS @ 6" O.C. OR EQU.

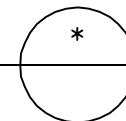
CUT/INSTALL WALL PANELS SUCH THAT THERE IS A ½" GAP WHICH IS TO BE FILLED W/ A CONT. BEAD OF EXPANDING FOAM SEALANT.



NOTE: ALL RED DOTS - APPLY CONTINUOUS ⅜" DIA. BEAD OF MASTIC SEALANT BETWEEN 2x MEMBER & PANEL FOAM.

[PANEL TYPE: STRUCTURAL PANEL APPLIED DIRECTLY TO THE FRAME]

PANEL EAVE CONNECTION DETAIL
SCALE: 1" = 1'-0"



Foard
P A N E L
i n c o r p o r a t e d
P.O. Box 185, West Chesterfield, NH 0346
(603) 256-8800