

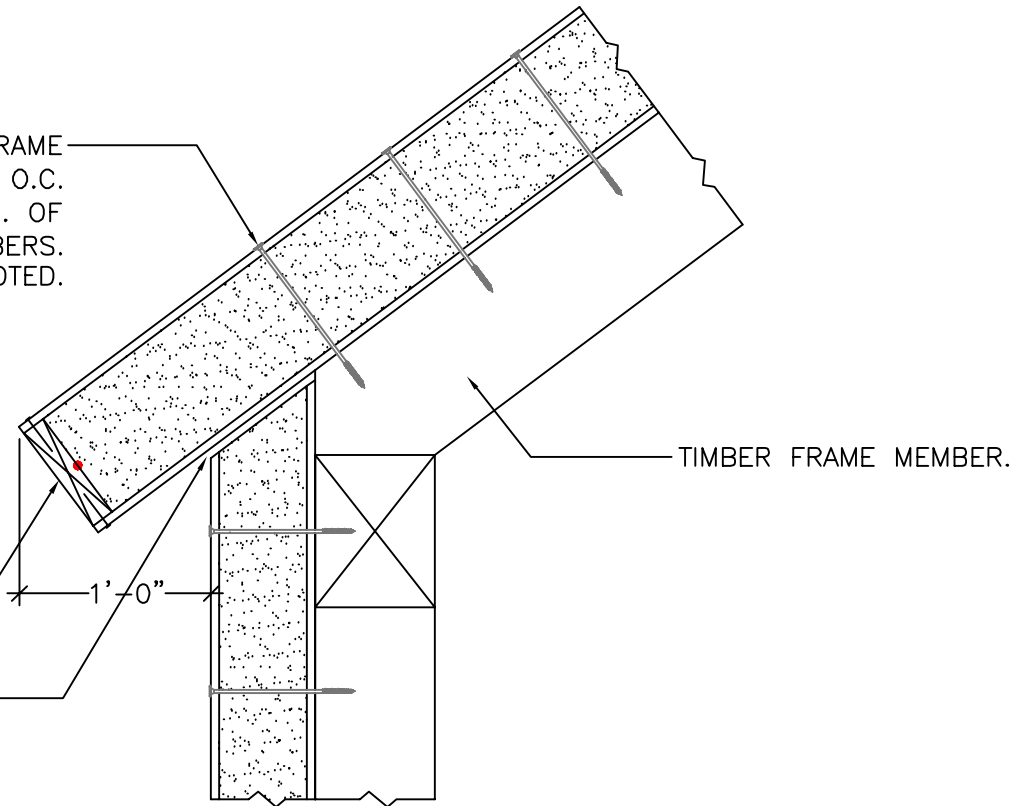
#24

# SQUARE CUT EAVE OVERHANG CONNECTION

ATTACH PANELS TO TIMBER FRAME MEMBERS W/ SIP FASTENERS @ 10" O.C. (5 PER 4' PANEL WIDTH) W/ A MIN. OF 2" OF EMBEDMENT INTO ALL TIMBERS. TYPICAL UNLESS OTHERWISE NOTED.

STUFF EXPOSED PANEL EDGE W/ CONT. 2x MATERIAL. SECURE OSB PANEL SKINS TO 2x W/ 0.131" DIA. x 2½" LONG GALV. NAILS @ 6" O.C. OR EQU.

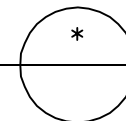
CUT/INSTALL WALL PANELS SUCH THAT THERE IS A ½" GAP WHICH IS TO BE FILLED W/ A CONT. BEAD OF EXPANDING FOAM SEALANT.



NOTE: ALL RED DOTS – APPLY CONTINUOUS ⅜" DIA. BEAD OF MASTIC SEALANT BETWEEN 2x MEMBER & PANEL FOAM.

PANEL TYPE: STRUCTURAL PANEL APPLIED DIRECTLY TO THE FRAME

PANEL EAVE CONNECTION DETAIL  
SCALE: 1" = 1'-0"



**Foard**  
 P A N E L  
 incorporated  
 P.O. Box 185, West Chesterfield, NH 0346  
 (603) 256-8800