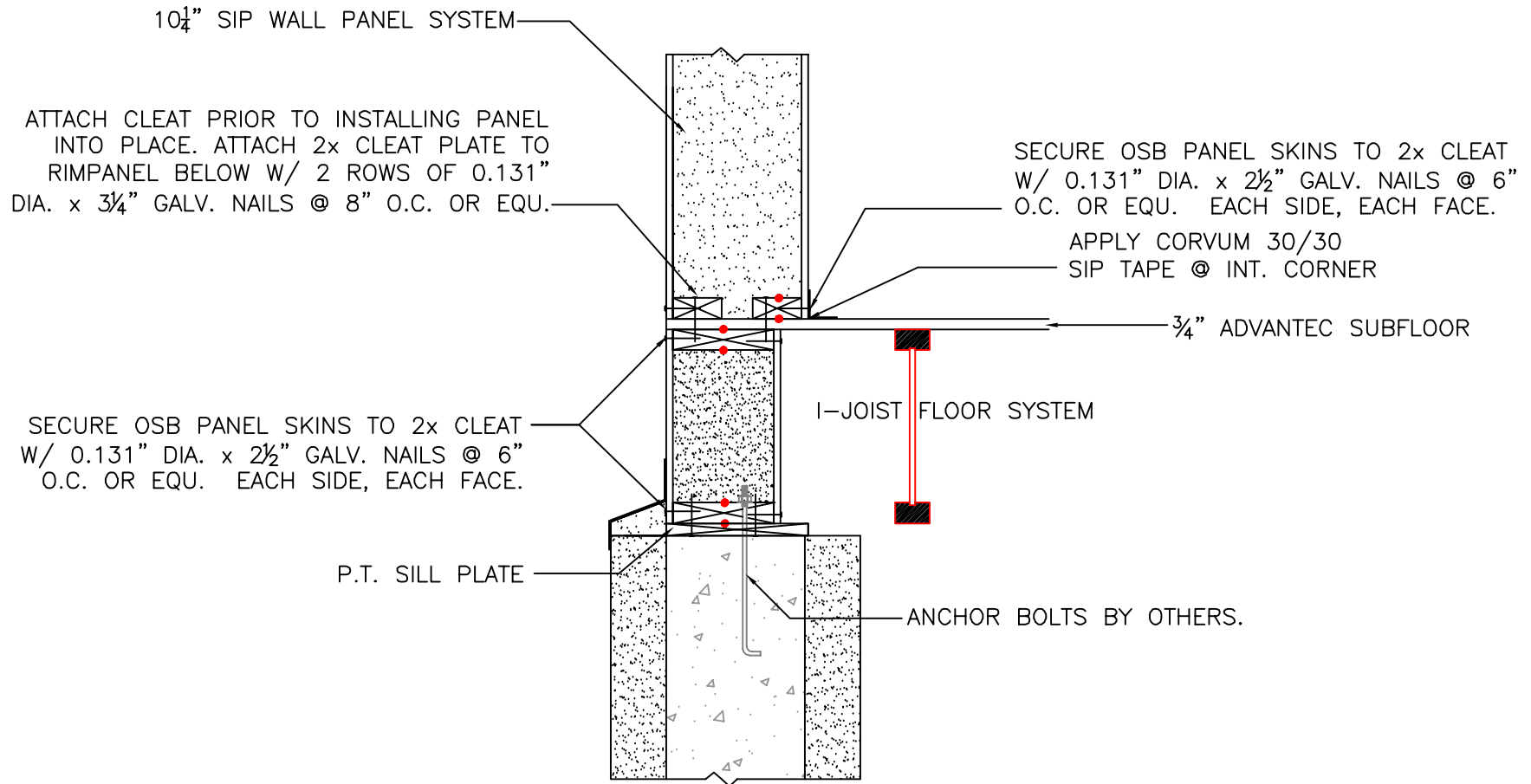


ICF BASEMENT W/ RIMPANEL DETAIL #11



NOTE: ALL RED DOTS - APPLY CONTINUOUS $\frac{3}{8}$ " DIA. BEAD OF MASTIC SEALANT BETWEEN 2x MEMBER & PANEL FOAM.

RIMPANEL SILL @ ICF WALL CONNECTION DETAIL
SCALE: 1" = 1'-0"

11

Foard
P A N E L
i n c o r p o r a t e d
P.O. Box 185, West Chesterfield, NH 03466
(603) 256-8800