

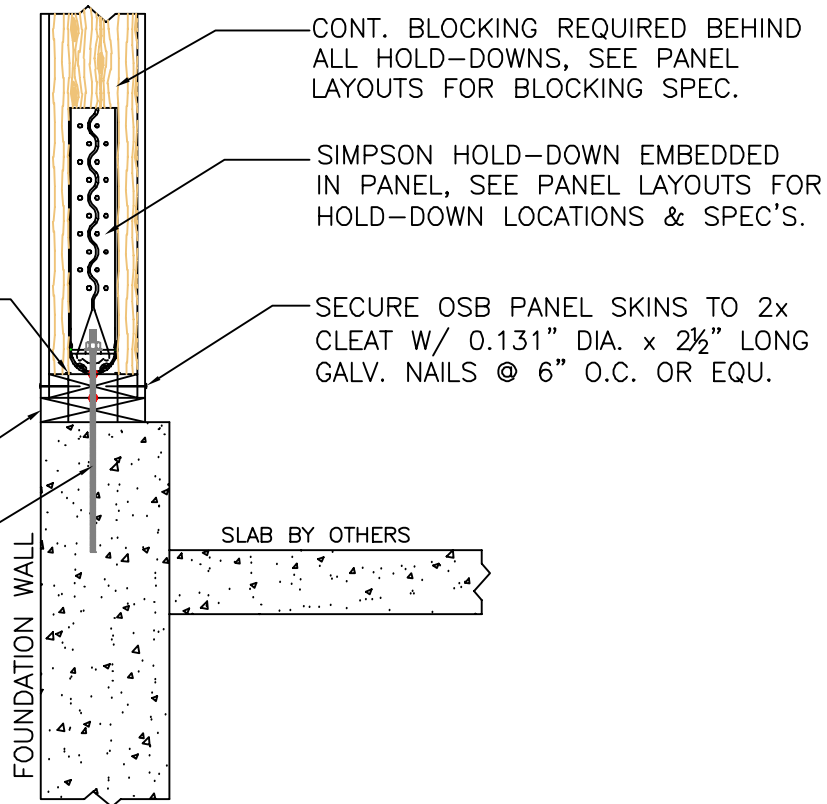
#60

PANEL SILL CONNECTION W/ HOLD-DOWN

ATTACH CLEAT PRIOR TO INSTALLING PANEL INTO PLACE. ATTACH 2x CLEAT PLATE TO DECK W/ 2 ROWS OF 0.131" DIA. x 3/4" LONG GALV. NAILS @ 6" O.C. OR EQU.

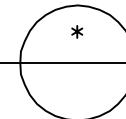
RIPPED P.T. SILL PLATE

THREADED ROD EPOXIED INTO CONC., SEE DWG'S FOR REQUIRED THREADED ROD EMBEDMENT DEPTH.



NOTE: ALL RED DOTS - APPLY CONTINUOUS 3/8" DIA. BEAD OF MASTIC SEALANT BETWEEN 2x MEMBER & PANEL FOAM.

PANEL SILL CONNECTION W/ HOLD-DOWN
SCALE: 1" = 1'-0"



Foard
P A N E L
i n c o r p o r a t e d
P.O. Box 185, West Chesterfield, NH 0346
(603) 256-8800