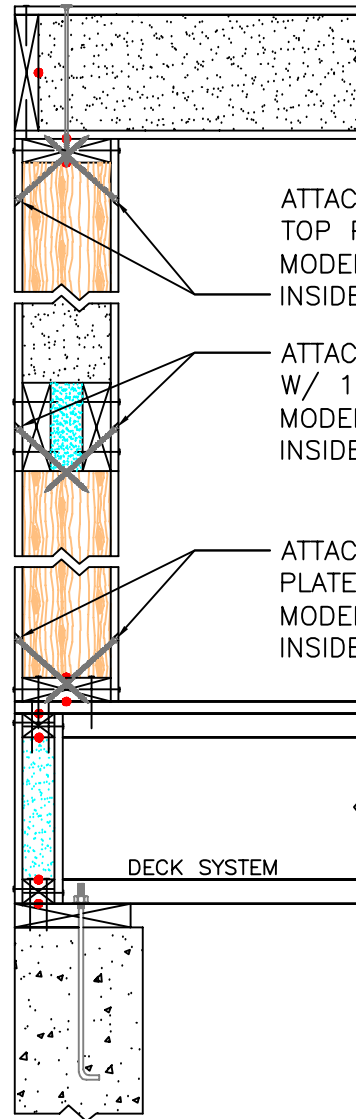


#57

KING STUD/WIND BRACING ATTACHMENT



ATTACH TOP OF KING STUD TO EMBEDDED TOP PLATE W/ 1 SIMPSON SCREW
MODEL #: SDWC15600 APPLIED FROM THE INSIDE & 1 FROM THE OUTSIDE.

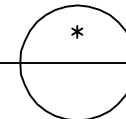
ATTACH HEADER TO TOP OF JACK BELOW W/ 1 SIMPSON SCREW
MODEL #: SDWC15600 APPLIED FROM THE INSIDE & 1 FROM THE OUTSIDE.

ATTACH BOTTOM OF BLOCKING TO CLEAT PLATE & SUBFLOOR W/ 1 SIMPSON SCREW
MODEL #: SDWC15600 APPLIED FROM THE INSIDE & 1 FROM THE OUTSIDE.

DECK SYSTEM

NOTE: ALL RED DOTS – APPLY CONTINUOUS $\frac{3}{8}$ " DIA. BEAD OF MASTIC SEALANT BETWEEN 2x MEMBER & PANEL FOAM.

KING STUD & WIND BRACING ATTACHMENT
SCALE: 1" = 1'-0"



Foard
P A N E L
i n c o r p o r a t e d
P.O. Box 185, West Chesterfield, NH 0346
(603) 256-8800