

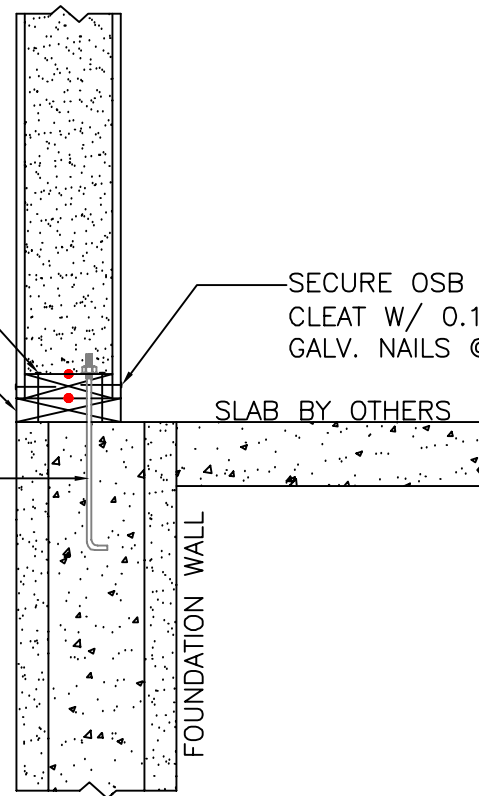
#16

PANEL TO SLAB CONNECTION

ATTACH CLEAT PRIOR TO INSTALLING PANEL INTO PLACE. ATTACH 2x CLEAT PLATE TO DECK W/ 2 ROWS OF 0.131" DIA. x 3¼" LONG GALV. NAILS @ 6" O.C. OR EQU.

RIPPED P.T. SILL PLATE

ANCHOR BOLT EMBEDDED IN CONC. ALLOW ANCHOR BOLT TO STICK ABOVE CONC. WALL 4¼" FOR PROPER 2x CLEAT PLATE ATTACHMENT.



SECURE OSB PANEL SKINS TO 2x CLEAT W/ 0.131" DIA. x 2½" LONG GALV. NAILS @ 6" O.C. OR EQU.

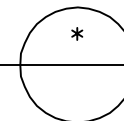
SLAB BY OTHERS

FOUNDATION WALL

NOTE: ALL RED DOTS - APPLY CONTINUOUS 3/8" DIA. BEAD OF MASTIC SEALANT BETWEEN 2x MEMBER & PANEL FOAM.

PANEL SILL CONNECTION DETAIL

SCALE: 1" = 1'-0"



Foard
P A N E L
i n c o r p o r a t e d
P.O. Box 185, West Chesterfield, NH 0346
(603) 256-8800