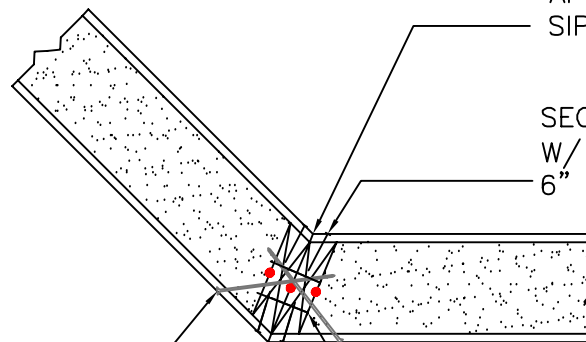


ATTACH PANEL TO ADJACENT PANEL
W/ SIP FASTENERS @ 10" O.C.
OR 5 PER 4' PANEL WIDTH.
TYPICAL UNLESS OTHERWISE NOTED.



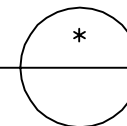
APPLY CORVUM 30/30
SIP TAPE @ INT. CORNER

SECURE OSB PANEL SKINS TO BEVELED BLOCKING
W/ 0.131" DIA. x 2½" LONG GALV. NAILS @
6" O.C. OR EQU. EACH SIDE, EACH FACE.

SECURE CONT. 2x EMBEDDED IN SIP
TO OSB PANEL SKIN W/ 2 STAGGERED
ROWS OF 0.131" DIA. x ¾" GALV.
NAILS @ 8" O.C. OR EQU.

NOTE: ALL RED DOTS - APPLY CONTINUOUS
¾" DIA. BEAD OF MASTIC SEALANT
BETWEEN 2x MEMBER & PANEL FOAM.

ANGLED CORNER CONNECTION DETAIL
SCALE: 1" = 1'-0"



Foard
P A N E L
i n c o r p o r a t e d
P.O. Box 185, West Chesterfield, NH 03466
(603) 256-8800