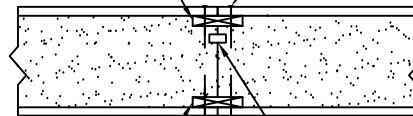


5/8" x 3" APA RATED
PLYWOOD SPLINE.

SECURE OSB PANEL SKINS TO SPLINE
W/ 0.131" DIA. x 2 1/2" GALV. NAILS @ 6"
O.C. OR EQU. EACH SIDE, EACH FACE.



5/8" x 3" APA RATED
PLYWOOD SPLINE.

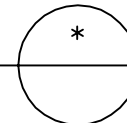
APPLY CONT. BEAD OF EXPANDING
FOAM SEALANT INTO FOAM CHANNEL
W/ DRILL & FILL METHOD (SEE BELOW).

DRILL AND FILL METHOD:

FROM EXTERIOR DRILL 3/8" DIA. HOLES IN PANEL CONNECTION @ 10" O.C. FOR WALL
PANELS & @ 6" O.C. FOR ROOF PANELS ALONG ENTIRE LENGTH OF JOINT. INJECT
FOAM INTO CAVITY FOR APPR. 5 SECONDS. FOAM MUST BE ALLOWED TO CURE FOR
AT LEAST 24 HOURS BEFORE HARDENED FOAM BALLS ARE REMOVED FROM THE EXTERIOR.
INJECT FOAM AS CLOSE AS POSSIBLE TO INTERIOR SKIN OF PANEL.

DBL. 3" WIDE PANEL SPLINE CONNECTION

SCALE: 1" = 1'-0"



Foard
P A N E L
i n c o r p o r a t e d
P.O. Box 185 , West Chesterfield , NH 03466
(603) 256 - 8800