

#1

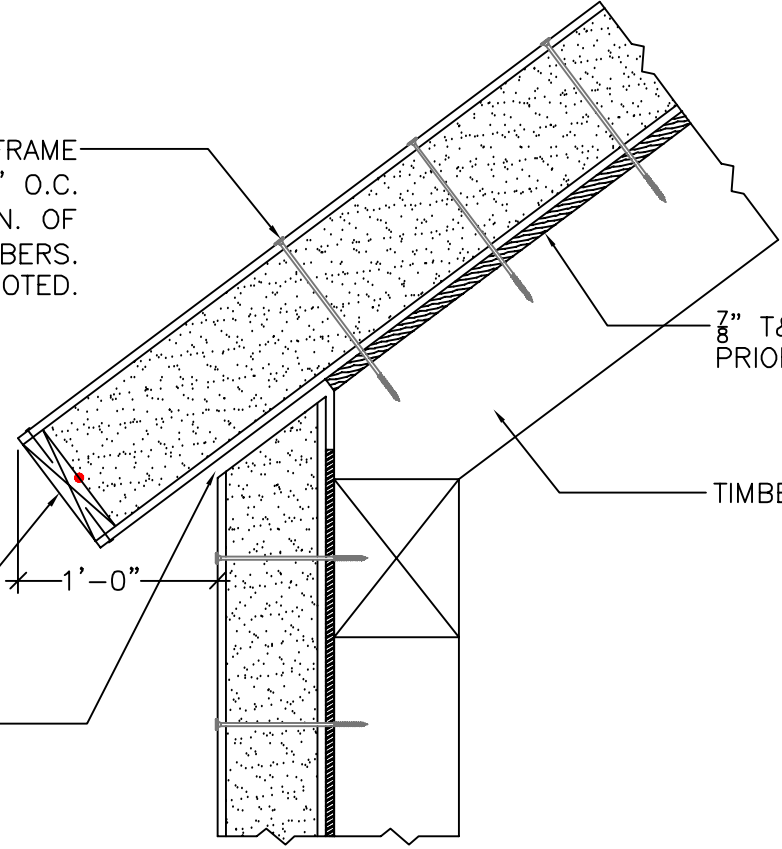
SQUARE CUT EAVE OVERHANG CONNECTION

ATTACH PANELS TO TIMBER FRAME MEMBERS W/ SIP FASTENERS @ 10" O.C. (5 PER 4' PANEL WIDTH) W/ A MIN. OF 2" OF EMBEDMENT INTO ALL TIMBERS. TYPICAL UNLESS OTHERWISE NOTED.

7/8" T&G DECKING APPLIED PRIOR TO PANEL INSTALLATION.

TIMBER FRAME MEMBER.

STUFF EXPOSED PANEL EDGE W/ CONT. 2x MATERIAL. SECURE OSB PANEL SKINS TO 2x W/ 0.131" DIA. x 2 1/2" LONG GALV. NAILS @ 6" O.C. OR EQU.

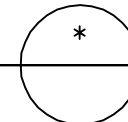


CUT/INSTALL WALL PANELS SUCH THAT THERE IS A 1/2" GAP WHICH IS TO BE FILLED W/ A CONT. BEAD OF EXPANDING FOAM SEALANT.

NOTE: ALL RED DOTS - APPLY CONTINUOUS 3/8" DIA. BEAD OF MASTIC SEALANT BETWEEN 2x MEMBER & PANEL FOAM.

PANEL EAVE CONNECTION DETAIL

SCALE: 1" = 1'-0"



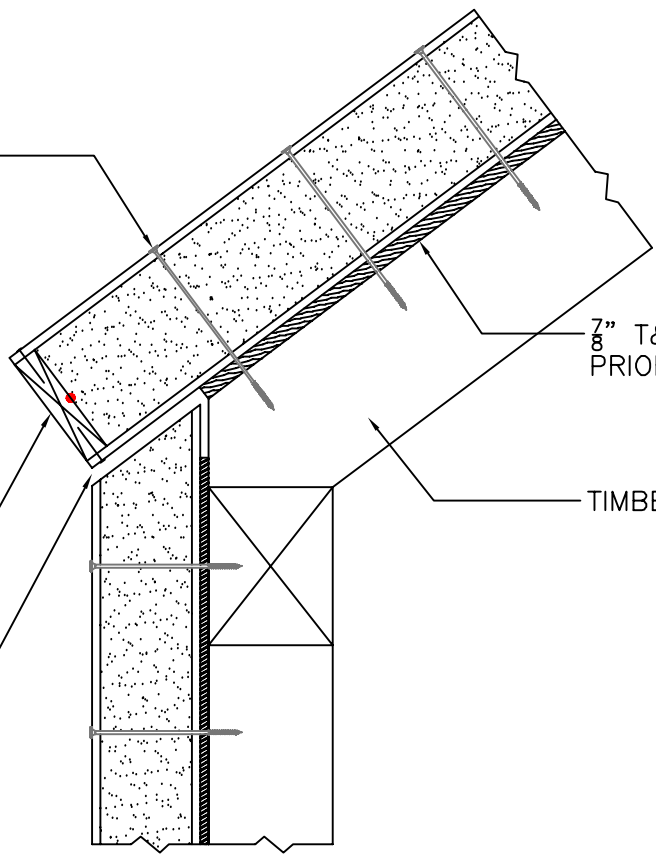
Foard
P A N E L
i n c o r p o r a t e d
P.O. Box 185, West Chesterfield, NH 0346
(603) 256-8800

SQUARE CUT EAVE CONNECTION

ATTACH PANELS TO TIMBER FRAME MEMBERS W/ SIP FASTENERS @ 10" O.C. (5 PER 4' PANEL WIDTH) W/ A MIN. OF 2" OF EMBEDMENT INTO ALL TIMBERS. TYPICAL UNLESS OTHERWISE NOTED.

STUFF EXPOSED PANEL EDGE W/ CONT. 2x MATERIAL. SECURE OSB PANEL SKINS TO 2x W/ 0.131" DIA. x 2 1/2" LONG GALV. NAILS @ 6" O.C. OR EQU.

CUT/INSTALL WALL PANELS SUCH THAT THERE IS A 1/2" GAP WHICH IS TO BE FILLED W/ A CONT. BEAD OF EXPANDING FOAM SEALANT.

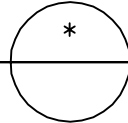


7/8" T&G DECKING APPLIED PRIOR TO PANEL INSTALLATION.

TIMBER FRAME MEMBER.

NOTE: ALL RED DOTS - APPLY CONTINUOUS 3/8" DIA. BEAD OF MASTIC SEALANT BETWEEN 2x MEMBER & PANEL FOAM.

PANEL EAVE CONNECTION DETAIL
SCALE: 1" = 1'-0"



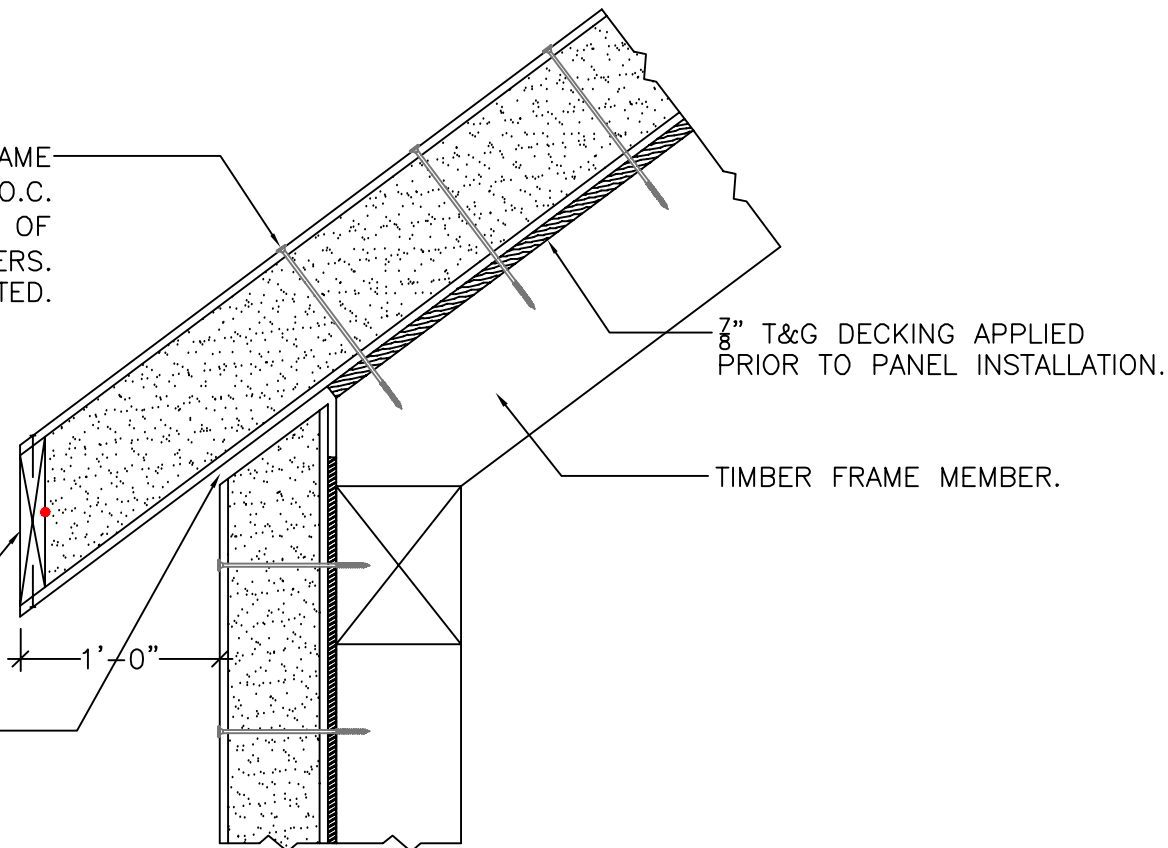
#3

PLUMB CUT EAVE OVERHANG CONNECTION

ATTACH PANELS TO TIMBER FRAME MEMBERS W/ SIP FASTENERS @ 10" O.C. (5 PER 4' PANEL WIDTH) W/ A MIN. OF 2" OF EMBEDMENT INTO ALL TIMBERS. TYPICAL UNLESS OTHERWISE NOTED.

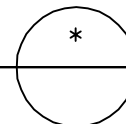
STUFF EXPOSED PANEL EDGE W/ CONT. BEVELED 2x MATERIAL. SECURE OSB PANEL SKINS TO 2x W/ 0.131" DIA. x 2½" LONG GALV. NAILS @ 6" O.C. OR EQU.

CUT/INSTALL WALL PANELS SUCH THAT THERE IS A ½" GAP WHICH IS TO BE FILLED W/ A CONT. BEAD OF EXPANDING FOAM SEALANT.



NOTE: ALL RED DOTS – APPLY CONTINUOUS 3/8" DIA. BEAD OF MASTIC SEALANT BETWEEN 2x MEMBER & PANEL FOAM.

PANEL EAVE CONNECTION DETAIL
SCALE: 1" = 1'-0"



Foard
P A N E L
i n c o r p o r a t e d
P.O. Box 185, West Chesterfield, NH 0346
(603) 256-8800

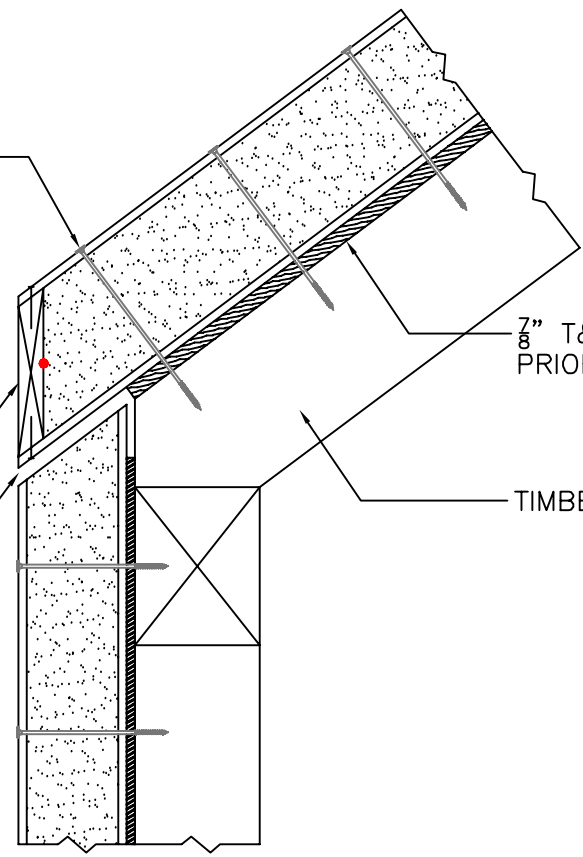
#4

PLUMB CUT EAVE CONNECTION

ATTACH PANELS TO TIMBER FRAME MEMBERS W/ SIP FASTENERS @ 10" O.C. (5 PER 4' PANEL WIDTH) W/ A MIN. OF 2" OF EMBEDMENT INTO ALL TIMBERS. TYPICAL UNLESS OTHERWISE NOTED.

STUFF EXPOSED PANEL EDGE W/ CONT. BEVELED 2x MATERIAL. SECURE OSB PANEL SKINS TO 2x W/ 0.131" DIA. x 2 1/2" LONG GALV. NAILS @ 6" O.C. OR EQU.

CUT/INSTALL WALL PANELS SUCH THAT THERE IS A 1/2" GAP WHICH IS TO BE FILLED W/ A CONT. BEAD OF EXPANDING FOAM SEALANT.

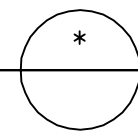


7/8" T&G DECKING APPLIED PRIOR TO PANEL INSTALLATION.

TIMBER FRAME MEMBER.

NOTE: ALL RED DOTS - APPLY CONTINUOUS 3/8" DIA. BEAD OF MASTIC SEALANT BETWEEN 2x MEMBER & PANEL FOAM.

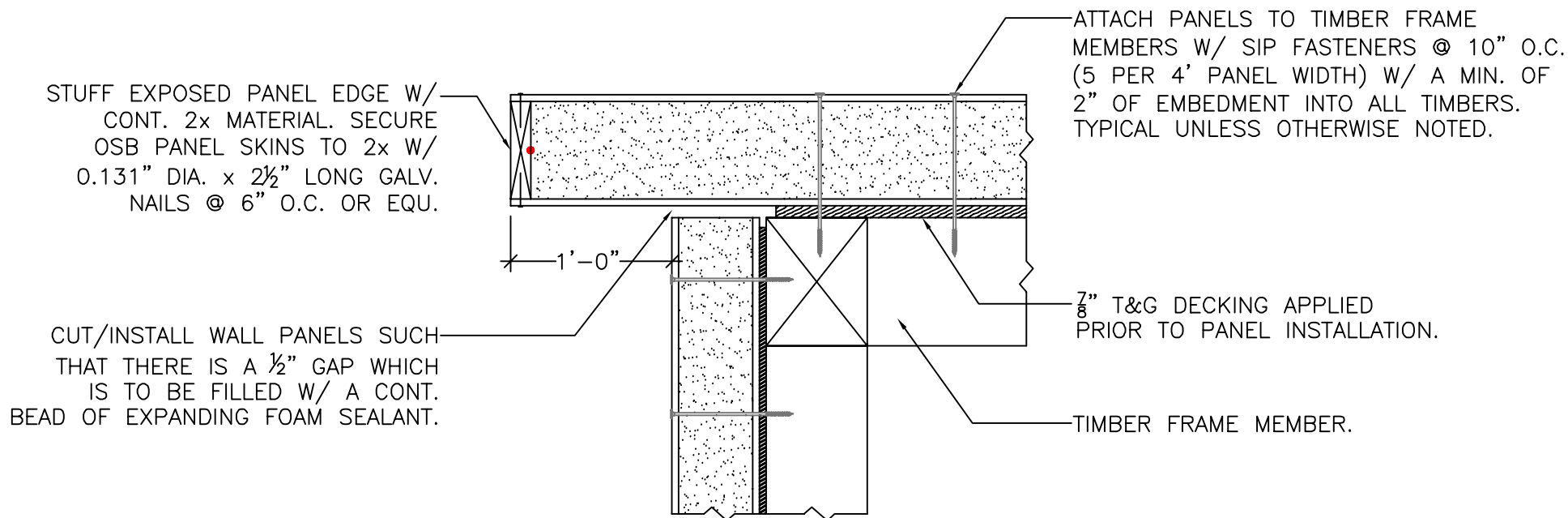
PANEL EAVE CONNECTION DETAIL
SCALE: 1" = 1'-0"



Foard
P A N E L
i n c o r p o r a t e d
P.O. Box 185, West Chesterfield, NH 0346
(603) 256-8800

#5

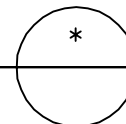
ROOF PANEL RAKE OVERHANG CONNECTION



NOTE: ALL RED DOTS - APPLY CONTINUOUS 3/8" DIA. BEAD OF MASTIC SEALANT BETWEEN 2x MEMBER & PANEL FOAM.

PANEL RAKE CONNECTION DETAIL

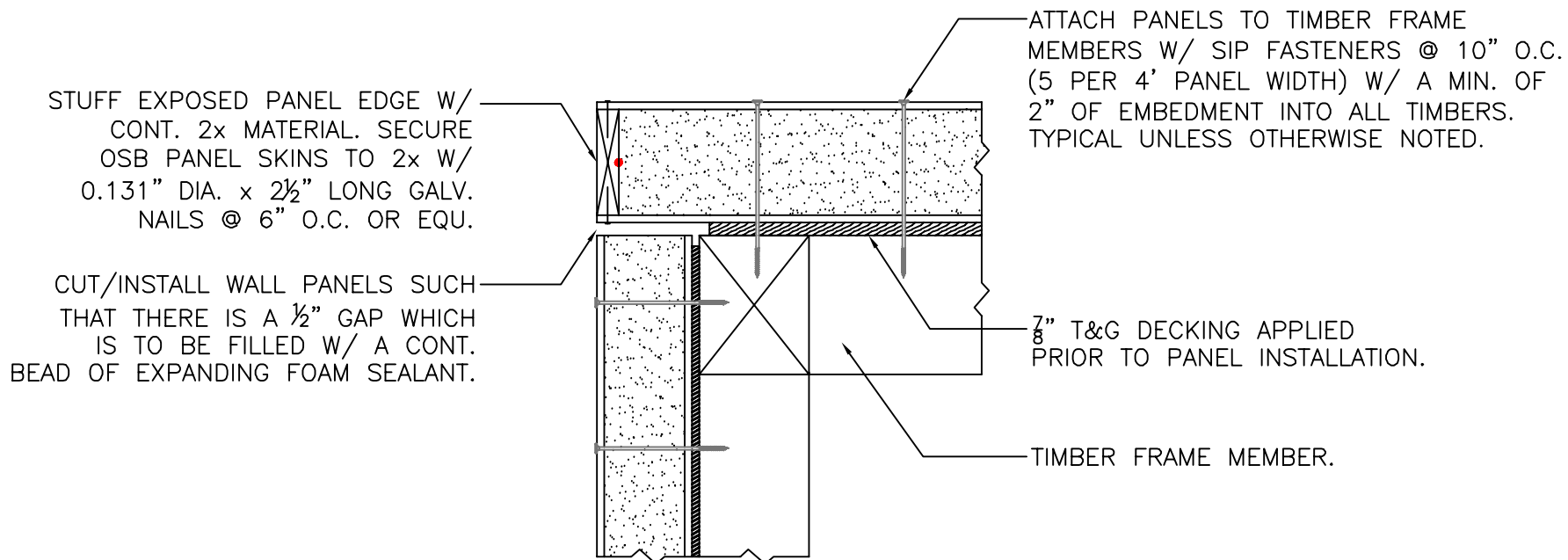
SCALE: 1" = 1'-0"



Foard
P A N E L
i n c o r p o r a t e d
P.O. Box 185, West Chesterfield, NH 0346
(603) 256-8800

#6

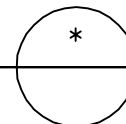
ROOF PANEL RAKE CONNECTION



NOTE: ALL RED DOTS – APPLY CONTINUOUS
3/8" DIA. BEAD OF MASTIC SEALANT
BETWEEN 2x MEMBER & PANEL FOAM.

PANEL RAKE CONNECTION DETAIL

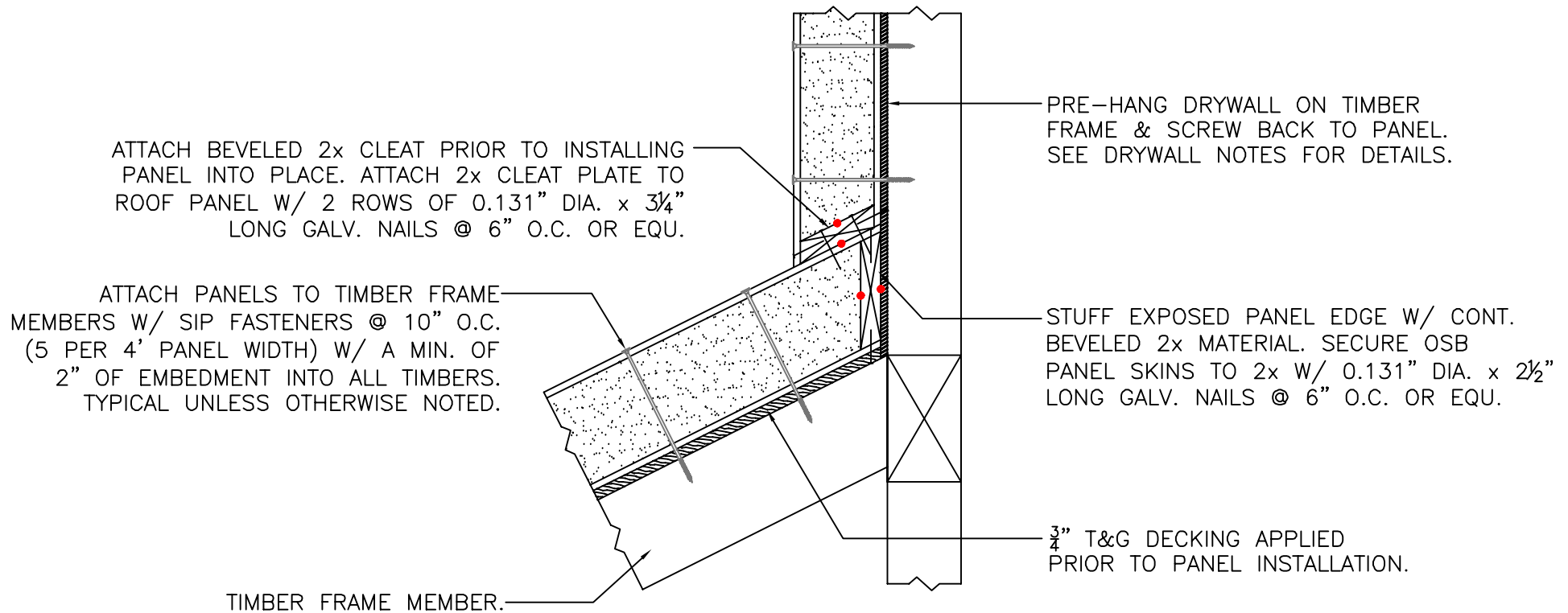
SCALE: 1" = 1'-0"



Foard
P A N E L
i n c o r p o r a t e d
P.O. Box 185, West Chesterfield, NH 0346
(603) 256-8800

#7

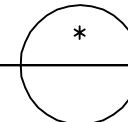
UPPER WALL TO ROOF ATTACHMENT DETAIL



NOTE: ALL RED DOTS - APPLY CONTINUOUS 3/8" DIA. BEAD OF MASTIC SEALANT BETWEEN 2x MEMBER & PANEL FOAM.

UPPER WALL TO ROOF ATTACHMENT DETAIL

SCALE: 1" = 1'-0"



Foard
P A N E L
i n c o r p o r a t e d
P.O. Box 185, West Chesterfield, NH 0346
(603) 256-8800