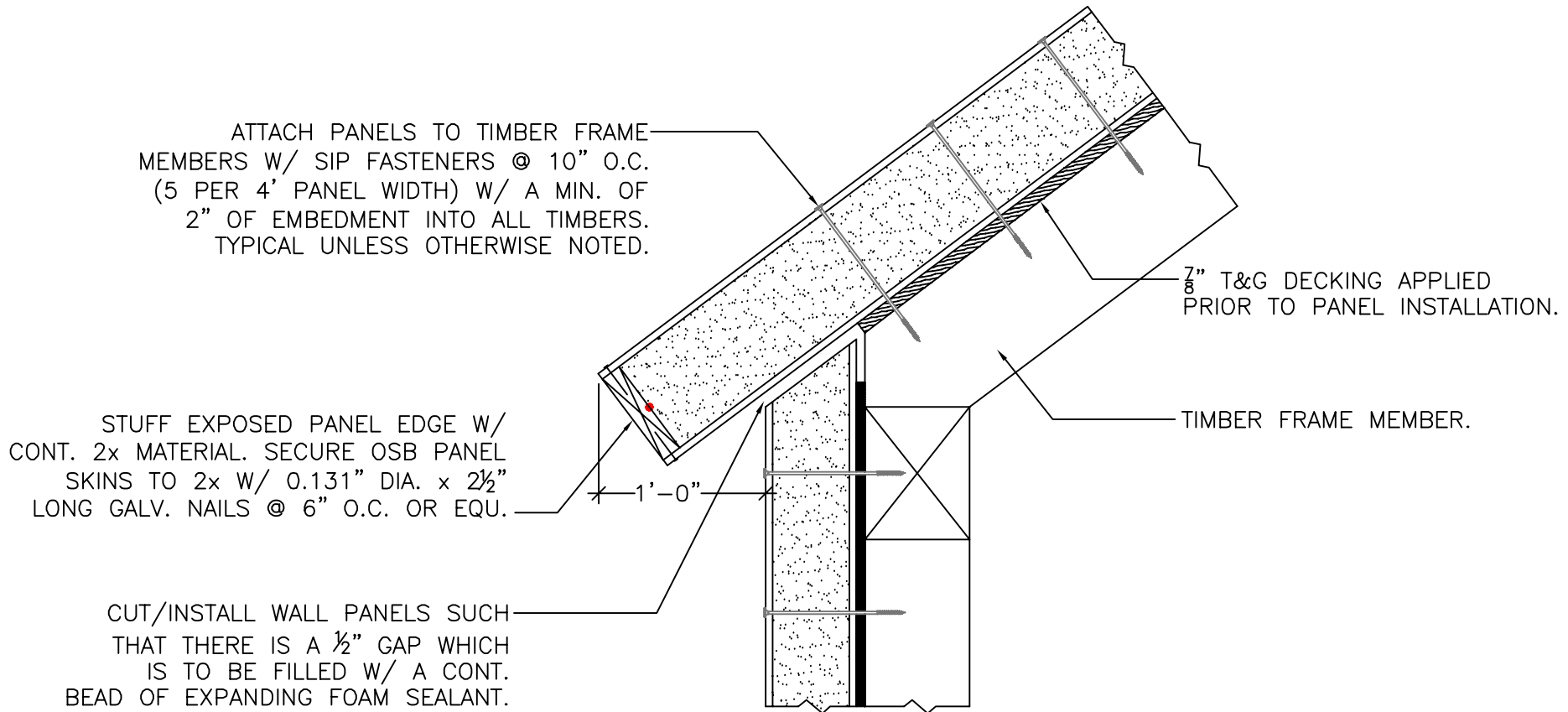


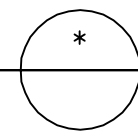
#1

# SQUARE CUT EAVE OVERHANG CONNECTION



NOTE: ALL RED DOTS - APPLY CONTINUOUS 3/8" DIA. BEAD OF MASTIC SEALANT BETWEEN 2x MEMBER & PANEL FOAM.

PANEL EAVE CONNECTION DETAIL  
SCALE: 1" = 1'-0"



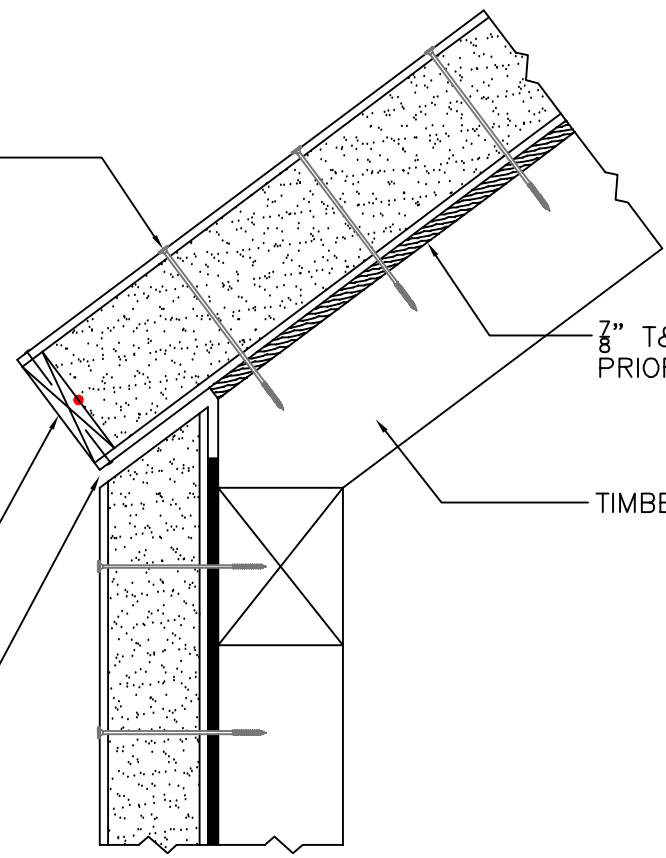
**Foard**  
P A N E L  
i n c o r p o r a t e d  
P.O. Box 185 , West Chesterfield , NH 0346  
( 603 ) 256 - 8800

# SQUARE CUT EAVE CONNECTION

ATTACH PANELS TO TIMBER FRAME MEMBERS W/ SIP FASTENERS @ 10" O.C. (5 PER 4' PANEL WIDTH) W/ A MIN. OF 2" OF EMBEDMENT INTO ALL TIMBERS. TYPICAL UNLESS OTHERWISE NOTED.

STUFF EXPOSED PANEL EDGE W/ CONT. 2x MATERIAL. SECURE OSB PANEL SKINS TO 2x W/ 0.131" DIA. x 2 1/2" LONG GALV. NAILS @ 6" O.C. OR EQU.

CUT/INSTALL WALL PANELS SUCH THAT THERE IS A 1/2" GAP WHICH IS TO BE FILLED W/ A CONT. BEAD OF EXPANDING FOAM SEALANT.

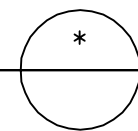


7/8" T&G DECKING APPLIED PRIOR TO PANEL INSTALLATION.

TIMBER FRAME MEMBER.

NOTE: ALL RED DOTS - APPLY CONTINUOUS 3/8" DIA. BEAD OF MASTIC SEALANT BETWEEN 2x MEMBER & PANEL FOAM.

PANEL EAVE CONNECTION DETAIL  
SCALE: 1" = 1'-0"



#3

# PLUMB CUT EAVE OVERHANG CONNECTION

ATTACH PANELS TO TIMBER FRAME MEMBERS W/ SIP FASTENERS @ 10" O.C. (5 PER 4' PANEL WIDTH) W/ A MIN. OF 2" OF EMBEDMENT INTO ALL TIMBERS. TYPICAL UNLESS OTHERWISE NOTED.

7" T&G DECKING APPLIED PRIOR TO PANEL INSTALLATION.

STUFF EXPOSED PANEL EDGE W/ CONT. BEVELED 2x MATERIAL. SECURE OSB PANEL SKINS TO 2x W/ 0.131" DIA. x 2 1/2" LONG GALV. NAILS @ 6" O.C. OR EQU.

TIMBER FRAME MEMBER.

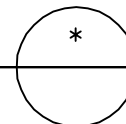
1'-0"

CUT/INSTALL WALL PANELS SUCH THAT THERE IS A 1/2" GAP WHICH IS TO BE FILLED W/ A CONT. BEAD OF EXPANDING FOAM SEALANT.

NOTE: ALL RED DOTS - APPLY CONTINUOUS 3/8" DIA. BEAD OF MASTIC SEALANT BETWEEN 2x MEMBER & PANEL FOAM.

PANEL EAVE CONNECTION DETAIL

SCALE: 1" = 1'-0"



**Foard**  
P A N E L  
i n c o r p o r a t e d  
P.O. Box 185, West Chesterfield, NH 0346  
(603) 256-8800

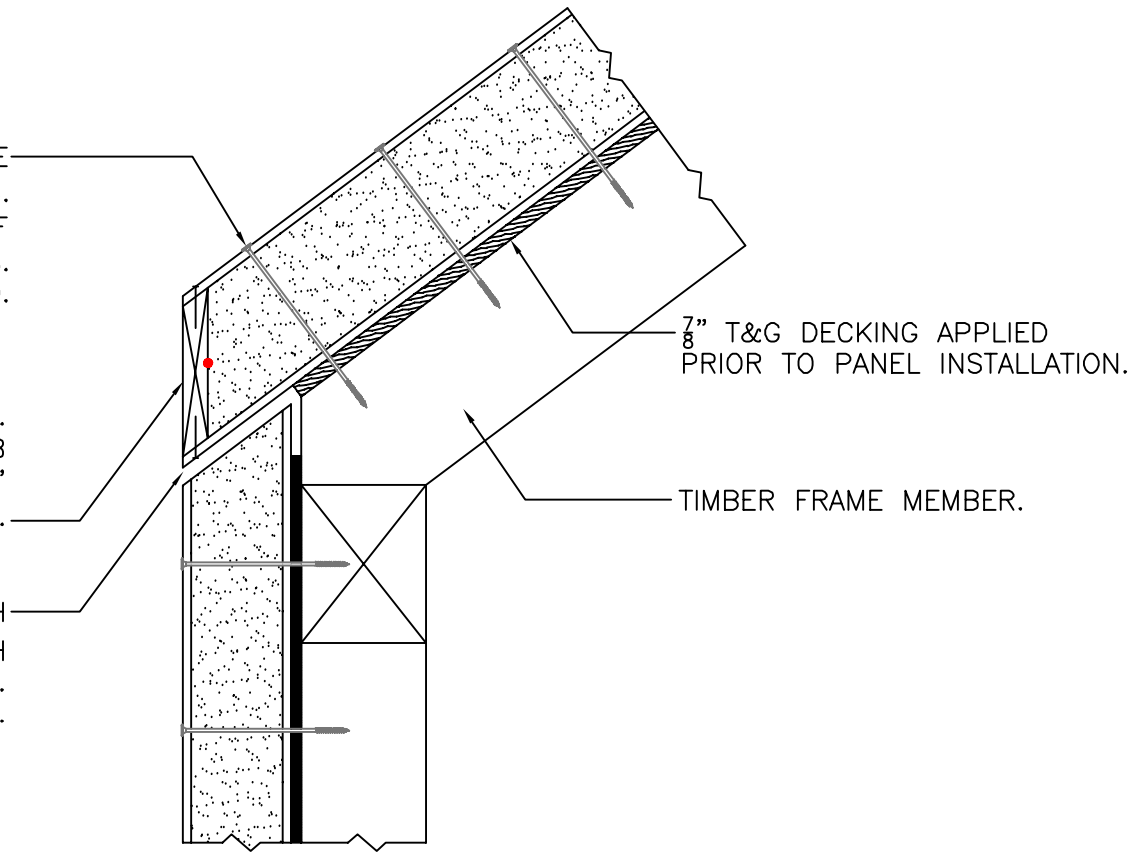
#4

# PLUMB CUT EAVE CONNECTION

ATTACH PANELS TO TIMBER FRAME MEMBERS W/ SIP FASTENERS @ 10" O.C. (5 PER 4' PANEL WIDTH) W/ A MIN. OF 2" OF EMBEDMENT INTO ALL TIMBERS. TYPICAL UNLESS OTHERWISE NOTED.

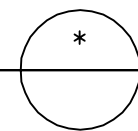
STUFF EXPOSED PANEL EDGE W/ CONT. BEVELED 2x MATERIAL. SECURE OSB PANEL SKINS TO 2x W/ 0.131" DIA. x 2 1/2" LONG GALV. NAILS @ 6" O.C. OR EQU.

CUT/INSTALL WALL PANELS SUCH THAT THERE IS A 1/2" GAP WHICH IS TO BE FILLED W/ A CONT. BEAD OF EXPANDING FOAM SEALANT.



NOTE: ALL RED DOTS - APPLY CONTINUOUS 3/8" DIA. BEAD OF MASTIC SEALANT BETWEEN 2x MEMBER & PANEL FOAM.

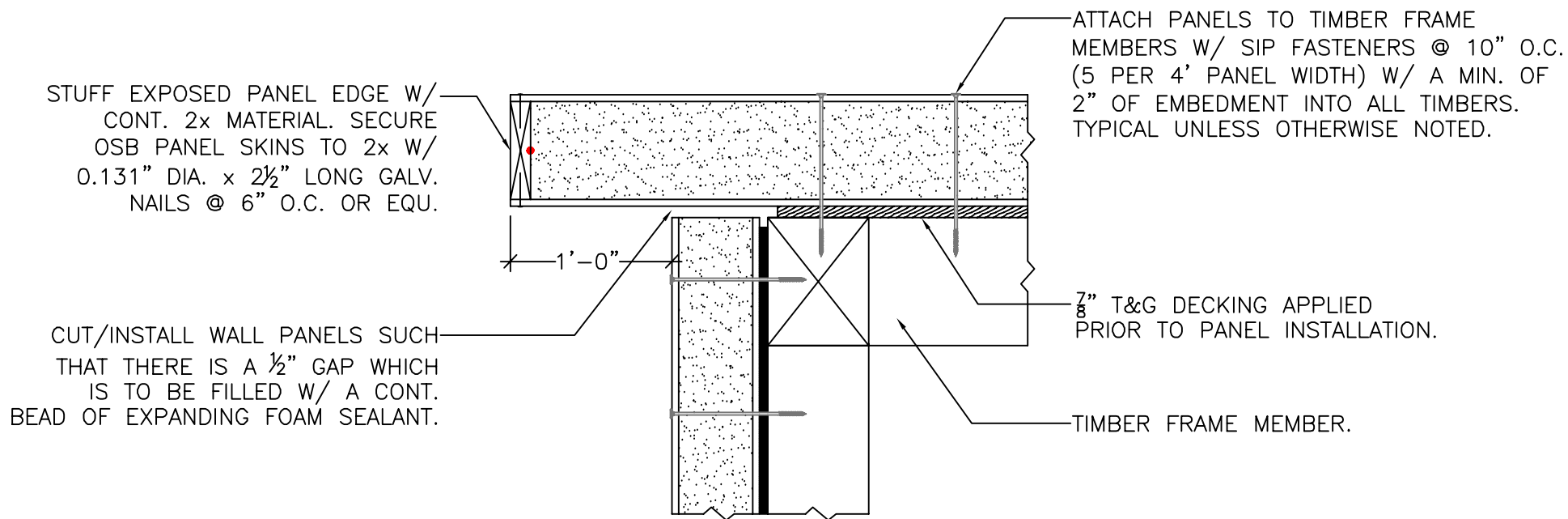
PANEL EAVE CONNECTION DETAIL  
SCALE: 1" = 1'-0"



**Foard**  
 PANEL  
 incorporated  
 P.O. Box 185, West Chesterfield, NH 0346  
 (603) 256-8800

#5

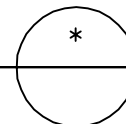
# ROOF PANEL RAKE OVERHANG CONNECTION



NOTE: ALL RED DOTS - APPLY CONTINUOUS  
3/8" DIA. BEAD OF MASTIC SEALANT  
BETWEEN 2x MEMBER & PANEL FOAM.

PANEL RAKE CONNECTION DETAIL

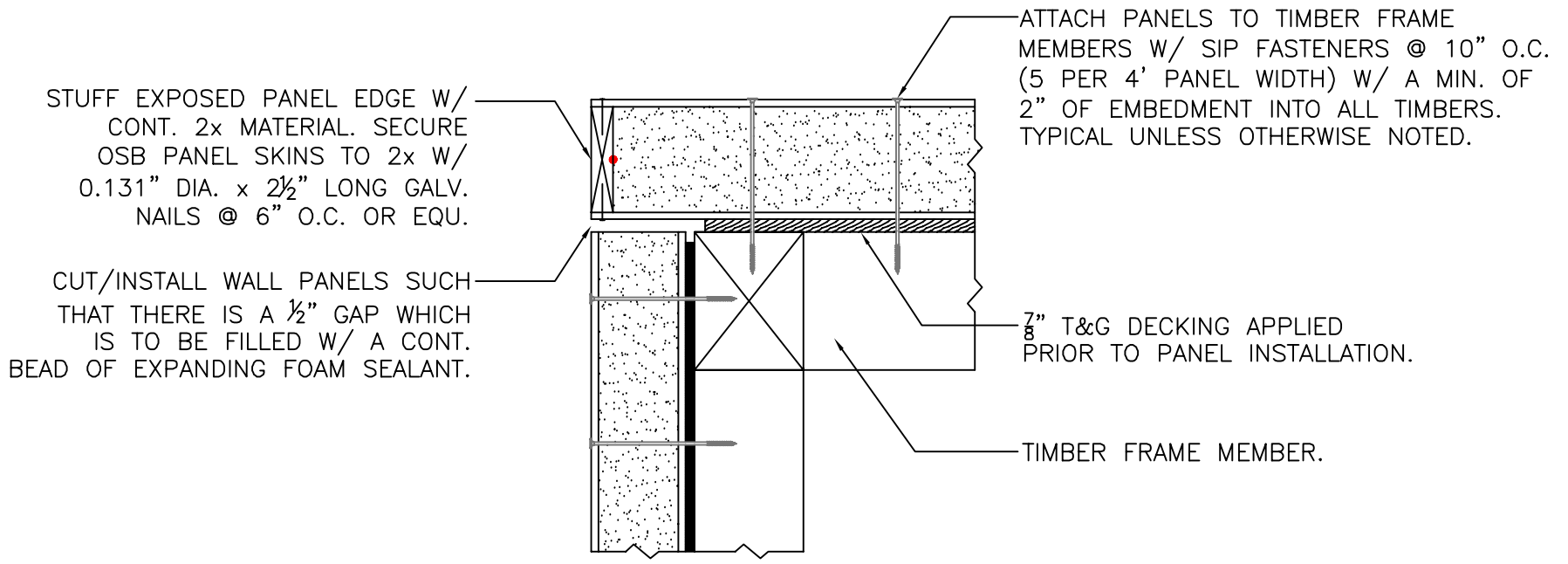
SCALE: 1" = 1'-0"



**Foard**  
P A N E L  
i n c o r p o r a t e d  
P.O. Box 185, West Chesterfield, NH 0346  
(603) 256-8800

#6

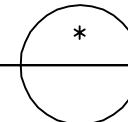
# ROOF PANEL RAKE CONNECTION



NOTE: ALL RED DOTS – APPLY CONTINUOUS  
3/8" DIA. BEAD OF MASTIC SEALANT  
BETWEEN 2x MEMBER & PANEL FOAM.

PANEL RAKE CONNECTION DETAIL

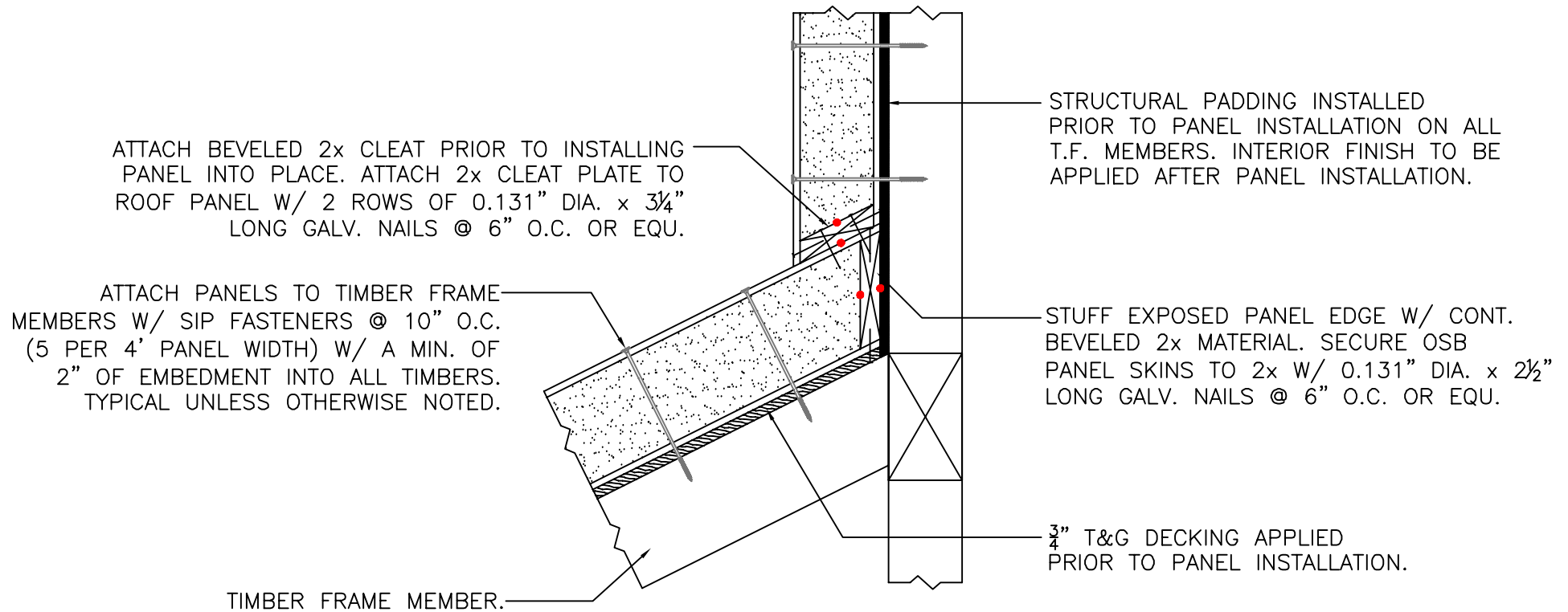
SCALE: 1" = 1'-0"



**Foard**  
P A N E L  
i n c o r p o r a t e d  
P.O. Box 185, West Chesterfield, NH 0346  
(603) 256-8800

#7

# UPPER WALL TO ROOF ATTACHMENT DETAIL



ATTACH BEVELED 2x CLEAT PRIOR TO INSTALLING PANEL INTO PLACE. ATTACH 2x CLEAT PLATE TO ROOF PANEL W/ 2 ROWS OF 0.131" DIA. x 3/4" LONG GALV. NAILS @ 6" O.C. OR EQU.

ATTACH PANELS TO TIMBER FRAME MEMBERS W/ SIP FASTENERS @ 10" O.C. (5 PER 4' PANEL WIDTH) W/ A MIN. OF 2" OF EMBEDMENT INTO ALL TIMBERS. TYPICAL UNLESS OTHERWISE NOTED.

TIMBER FRAME MEMBER.

STRUCTURAL PADDING INSTALLED PRIOR TO PANEL INSTALLATION ON ALL T.F. MEMBERS. INTERIOR FINISH TO BE APPLIED AFTER PANEL INSTALLATION.

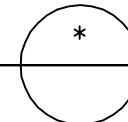
STUFF EXPOSED PANEL EDGE W/ CONT. BEVELED 2x MATERIAL. SECURE OSB PANEL SKINS TO 2x W/ 0.131" DIA. x 2 1/2" LONG GALV. NAILS @ 6" O.C. OR EQU.

3/4" T&G DECKING APPLIED PRIOR TO PANEL INSTALLATION.

NOTE: ALL RED DOTS - APPLY CONTINUOUS 3/8" DIA. BEAD OF MASTIC SEALANT BETWEEN 2x MEMBER & PANEL FOAM.

UPPER WALL TO ROOF ATTACHMENT DETAIL

SCALE: 1" = 1'-0"



**Foard**  
 PANEL  
 incorporated  
 P.O. Box 185, West Chesterfield, NH 0346  
 (603) 256-8800