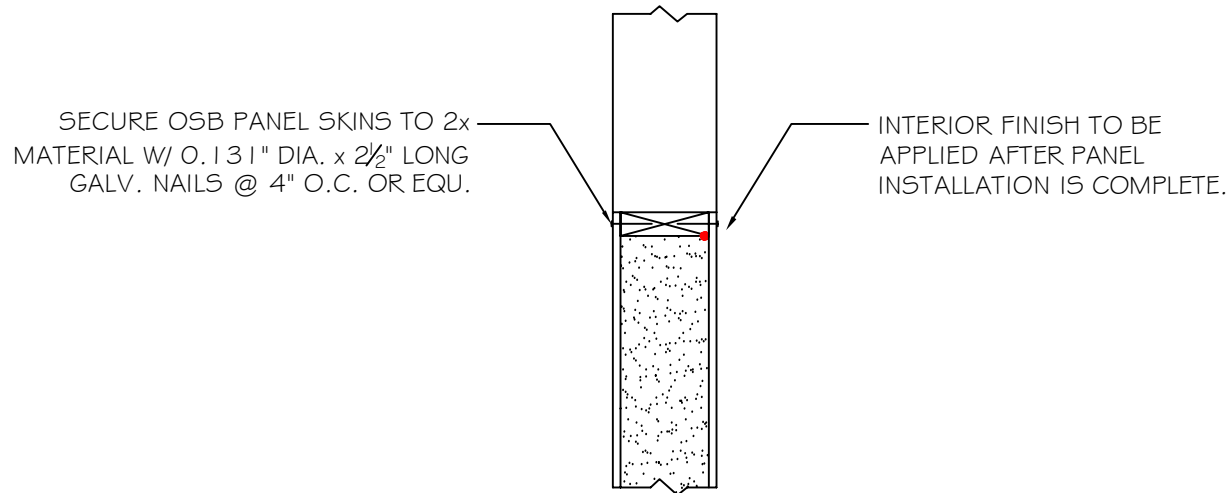


#20

ROUGH OPENING EDGE DETAIL



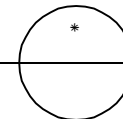
NOTE: ALL RED DOTS - APPLY CONTINUOUS 3/8" DIA. BEAD OF MASTIC SEALANT AT WOOD TO FOAM & WOOD TO WOOD CONNECTIONS AT INTERIOR SIDE, UNLESS OTHERWISE NOTED.

HEADER & SILL BLOCKING TO RUN BY VERTICAL JACKS. ALL ROUGH OPENING BLOCKING MUST BE RUN CONT. LEAVE DOOR JACKS TEMPORARILY UNFASTENED SO THAT ELECTRICAL WIRES CAN BE RUN BETWEEN JACK & PANEL FOAM

PANEL TYPE: STRUCTURAL PANELS APPLIED DIRECTLY TO PADDED FRAME

PANEL ROUGH OPENING EDGE DETAIL

SCALE: 1" = 1'-0"



DETAILS ARE TYPICAL OF STANDARD CONDITIONS AND MAY NOT APPLY TO ALL PROJECTS. REFER TO FINAL PROJECT APPROVAL DRAWINGS FOR SPECIFICATIONS. PLEASE CONTACT FPI TECHNICAL DEPARTMENT FOR QUESTIONS AND/OR CONCERNS.

Foard
PANEL

STRUCTURAL INSULATED PANELS
P.O. Box 185, 53 Slow Drive, W. Chesterfield, NH 03466

WWW.FOARDPANEL.COM

(800) - 644 - 8885